

June 2020: SOFA-defined Severe Injuries (SIs)

(compiled by the SOFA Working Group)

June 2020 is the latest month available for SIs as defined (see definition at bottom of page) by SOFA in its report, *Severe Injuries to Train and Engine Service Employees: Data Description and Injury Characteristics* (July 2001). Feel free to copy, circulate, reformat, and reference this information, extracted from the FRA's publicly-available, electronic casualty file (6180.55a) on August 28, 2020.

SIs in June 2020: There was 1 SIs in June 2020, a fracture to the leg or foot.

June: Present and Past Years	2020	2019	2018	2017	2016	2015
SIs	1	6	1	7	3	5
Amputations (counts included in SIs above)	0	1	2	1	0	0

SIs Year-to-Date: There have been 25 SIs in 2020, January through June. Four were amputations: 3 to the leg or foot; and 1 to various body parts. Note: SI counts reported herein are provisional, subject to revision. Because of revisions, year-to-date counts may not sum to counts published previously.

Year-to-Date: January through June	2020	2019	2018	2017	2016	2015
SIs	25	33	35	43	19	33
Amputations (counts included in SIs above)	4	3	3	5	2	4

Brief Description of the June 2020 SI:

#	Month	Day	State	Age	Injury	Description
1	June	15	IN	37	fracture: leg or foot	Slipped, fell, stumbled when stepping down while in/on a locomotive at a yard location.

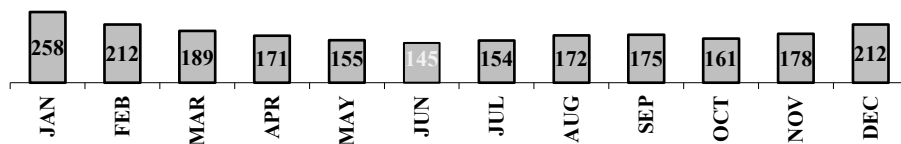
Comments: One reported SI in a month is an extremely low count. Since 1997, one SI reported in a month has occurred only 7 times through June 2020. There has never been a month in this period when zero SIs were reported. The highest monthly reported count was 22 SIs in December 2000.

Frequencies of Monthly Reported Counts of Severe Injuries, January 1997 through June 2020

Counts per month	frequency	percent
0	0	0.0%
1	7	2.5%
2	9	3.2%
3	18	6.4%
4	26	9.2%
5	35	12.4%
6 or greater	187	66.3%
total percent		100.0%

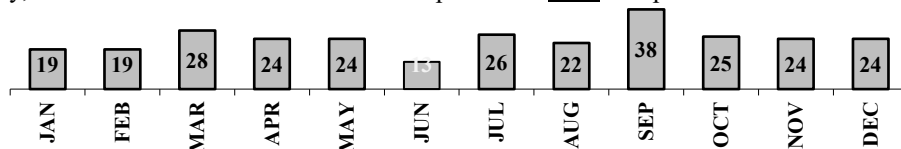
Monthly Reported Counts of 2,182 SOFA-defined Severe Injuries, January 1997 through June 2020

(Historically, June has the lowest counts for SIs)



Monthly Reported Counts of 286 Amputations, January 1997 through June 2020

(Historically, June also has the lowest counts of amputations. Note: Amputations are included in SI counts)



'Severe Injuries' were defined by the SOFA Working Group as FRA-reportable injuries to train and engine service employees that have a clear and verifiable diagnosis and met one or more of the following four criteria: (1) potentially life threatening; (2) high likelihood of permanent loss of function, permanent occupational limitation, or other permanent disability; (3) likely to result in significant work restrictions; or (4) result from a high energy impact to the human body. (SOFA recognizes that other types of injuries and illnesses cause significant harm to employees.)